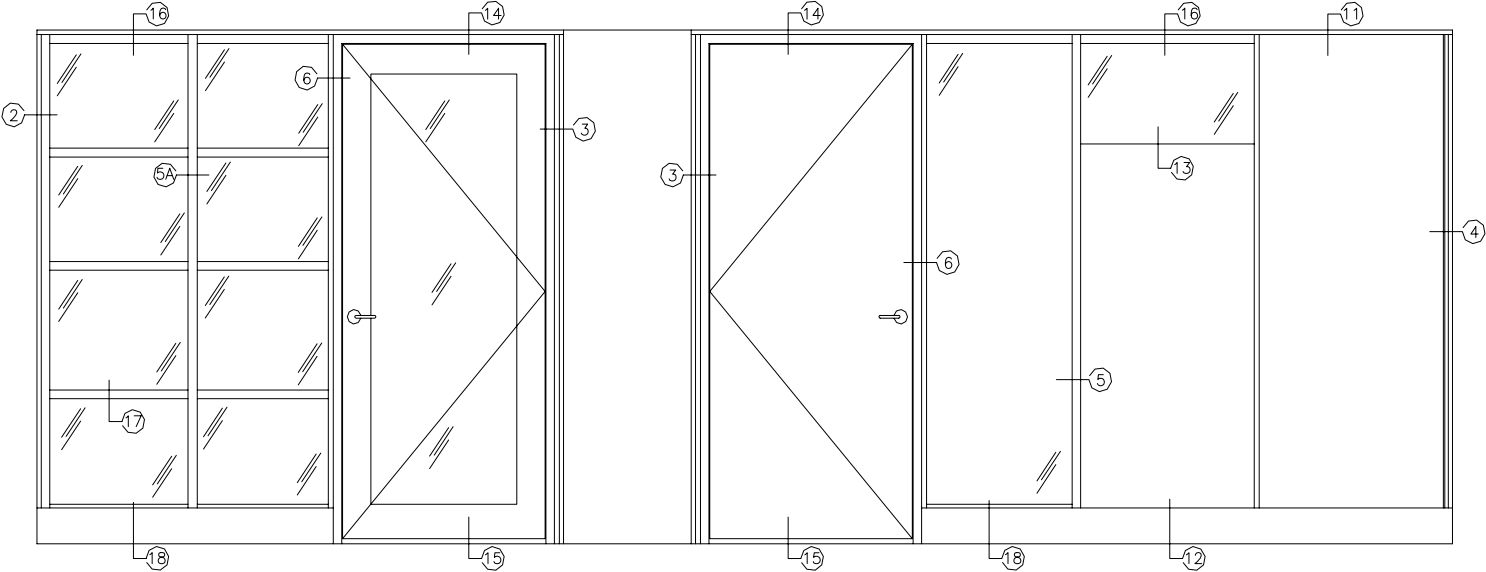
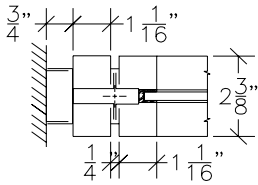


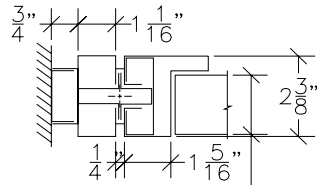
# ADANLOCK - "238" SERIES Partition System - ELEVATIONS



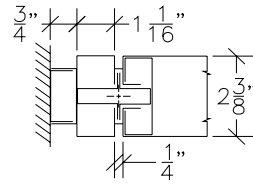
# ADANLOCK - "238" SERIES Partition System - DETAILS



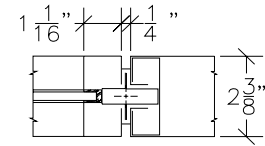
② FULL POST WALL  
CONDITION AT  
GLASS PANEL



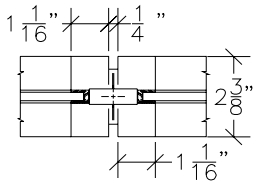
③ FULL POST WALL  
CONDITION AT  
DOOR FRAME



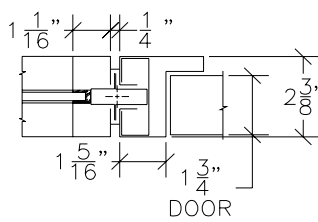
④ FULL POST WALL  
CONDITION AT  
SOLID PANEL



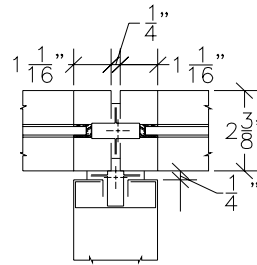
⑤ POST AT GLASS  
AND STEEL PANEL



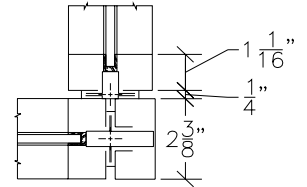
⑤A POST AT GLASS  
AND GLASS PANEL



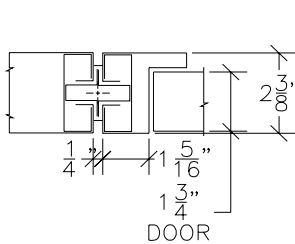
⑥ DOOR FRAME AT  
GLASS PANEL



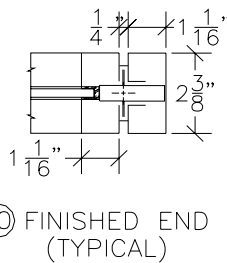
⑦ TEE CONDITION  
(TYPICAL)



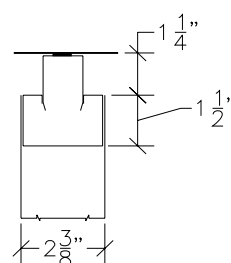
⑧ CORNER CONDITION  
(TYPICAL)



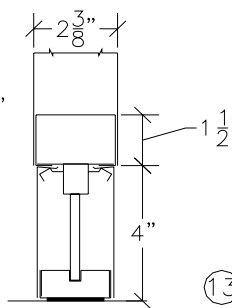
⑨ DOOR FRAME AT  
SOLID PANEL



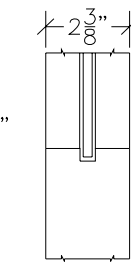
⑩ FINISHED END  
(TYPICAL)



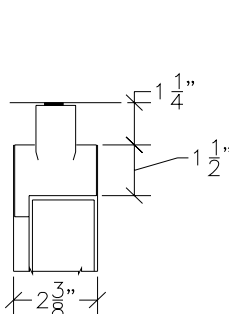
⑪ CEILING CONDITION  
AT SOLID PANEL



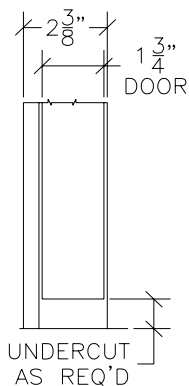
⑫ BASE CONDITION  
AT SOLID PANEL



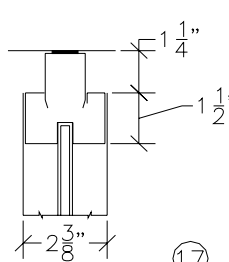
⑬ GLASS AND  
STEEL PANEL



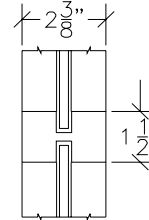
⑭ CEILING CONDITION  
AT DOOR FRAME



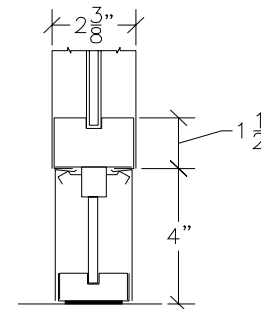
⑮ BASE CONDITION  
AT DOOR FRAME



⑯ CEILING  
CONDITION



⑰ INTERMEDIATE  
RAIL CONDITION



⑱ BASE CONDITION  
AT GLASS PANEL

# **ADANLOCK - "238" SERIES Partition System - SPECIFICATIONS**

## **GENERAL:**

Partitions shall be "238" Series as manufactured and installed by **Adanlock**. Panel widths and heights shall be as shown on the architects drawings. Panel and door units to be delineated by 3/8" reveal. The Non-progressive design shall allow de-mounting of adjacent units. All units are interchangeable with like size panels or door units. Partition design shall permit easy rearrangements with all parts reusable.

## **SYSTEM HANGING FEATURES:**

Each panel unit shall be factory prepared with concealed slotting to receive "hang-on" components adjustable to heights to suit, consisting of overhead storage, shelving, graphic aids, tackboards, work surfaces, etc.

## **INSTALLATION:**

Partitions shall be erected in a rigid manner, straight and plumb, with horizontal lines level. Hardware shall be adjusted in good working condition. All blocking above ceiling for bracing shall be provided by others. The general contractor shall provide soffit and wall finished openings that are square, straight and plumb for system installation. The floor shall be leveled and prepared by others for system installation.

## **MATERIALS:**

Flush metal panels shall be 2-3/8" thick, insulated and assembled into complete units. Panel skin shall be 20 Gauge stretcher leveled quality steel.

## **GLASS & GLAZING:**

Glass and glazing for partitions shall be furnished and installed by **ADANLOCK**; design, quality and thickness as specified and as shown on the architects drawings. Glass shall be bedded in polyurethane foam gasket of neutral color. Glass stop to be removable without screws.

## **CEILING CONNECTIONS:**

1-1/4" ceiling channel shall be 18 Gauge steel, constructed to be recessed behind face. Ceiling channel shall be secured to ceiling with light and sound seals between the wall channel and ceiling channel contact perimeter.

## **FLOOR CONNECTORS:**

The floor channel shall be 18 Gauge steel secured to the floor with light and sound seals between channel and floor. (Specify if partition is to be installed on top of carpet or unfinished floor base).

## **BASE CONNECTIONS:**

Base shall be 4" high, formed of 20 Gauge Steel, constructed to be recessed behind panel face. Base shall be continuous, snap-on and easily removed from either side for access to lay in wiring. No screws, tape or glue will be permitted.

## **DOORS & FRAMES:**

Doors to be 1-3/4" steel flush design or glazed as specified. Frames to be 18 Gauge steel properly mortised and reinforced for hardware. Follow the architectural door and hardware schedule for individual door requirements.

## **WIRING:**

Flexible cable (Max. 5/8" O.D.) in the partition base, post and door frame satisfies the national electric code as recommended standard practice. Electrical devices and fittings shall be furnished and installed by others. Cutouts for all electrical appurtenances provided by **Adanlock**.

## **HARDWARE:**

Unless otherwise specified, all door hardware shall be **Adanlock** standard cylindrical type latch set, 4-1/2" x 4-1/2" B.B. hinges and door stops. Finish: US-26D. Hardware supplied by others to be installed by **Adanlock**, unless otherwise specified.

### **FINISH:**

All steel parts shall be thoroughly cleaned, rinsed with rust inhibitor and properly dried before paint is applied. All members to be sprayed with an enamel primer and finish coat, properly baked to ensure lifetime durability. Color shall be selected from **Adanlock** standard color chart. **Adanlock's** exclusive modified epoxy powder paint finish to match architect's sample is also available.

### **ARCHITECTURAL FINISHES:**

If desired, per the architects selection, the panels may have vinyl, fabric, high pressure laminate, wood veneers, or other decorative finishes on all exposed surfaces to enhance appearance.

### **CLEANING:**

All rubbish and cuttings shall be removed and premises left broom clean. Finger marks shall be removed and scratches touched up neatly. Washing of partition, cleaning of glass or removing dust shall be performed by others.

### **GUARANTEE:**

All work shall be guaranteed for a period of 3 (three) years against defective material and workmanship.

## **PERFORMANCE REQUIREMENTS:**

### **SOUND CONTROL:**

All steel ceiling high partitions with recessed bases and ceiling trim and slots for "hang-ons", shall meet a minimum of 39 STC Rating in accordance with an independent laboratory test performed in accordance with ASTM E 90-75.

### **DEFLECTION:**

Panel deflection shall be 0.113 inches or less when tested under a load of 5 pounds per square foot. Furnish independent laboratory test report showing complete procedure and results.

### **LOAD DEFLECTION:**

Panels with hanging feature shall be capable of supporting a total load of 1125 pounds or greater. Furnish independent laboratory test report.

### **LINE SAFETY:**

Panels shall have a flame spread of 0 (zero) and smoke developed value of 25 when tested in accordance with ASTM E84-77A. Furnish independent laboratory test report.

**PLEASE NOTE THAT "ADANLOCK" OFFICE PARTITION SYSTEMS ARE MADE IN THE U.S.A. BY AMERICAN WORKERS USING AMERICAN MADE MATERIALS.**