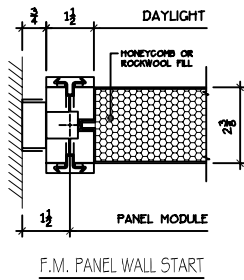


ADANLOCK ARCHITECTURAL WALL SYSTEMS

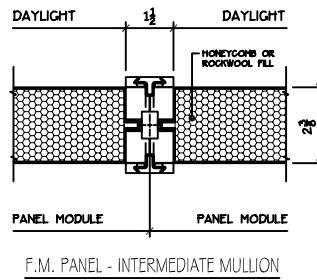
300 SERIES - STANDARD DETAILS

FLUSH METAL PANEL DETAILS

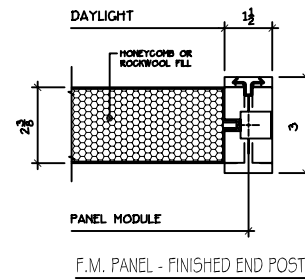
VERTICAL
MULLION
POSTS



F.M. PANEL WALL START

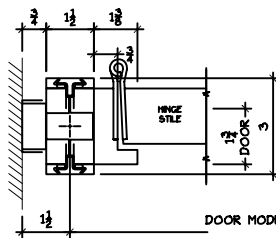


F.M. PANEL - INTERMEDIATE MULLION

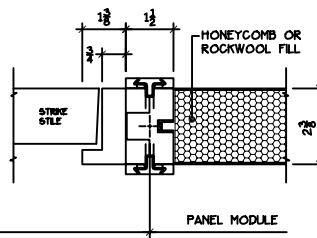


F.M. PANEL - FINISHED END POST

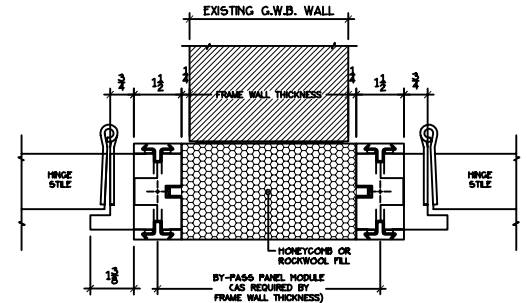
DOOR
FRAME
JAMBS



DOOR FRAME AT WALL START

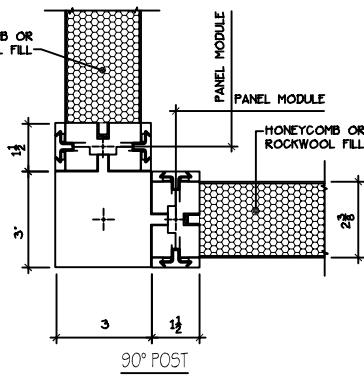


DOOR FRAME AT F.M. PANEL

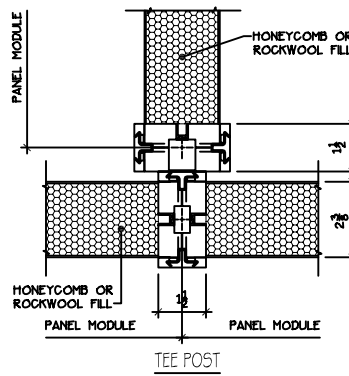


TYPICAL F.M. BY-PASS PANEL

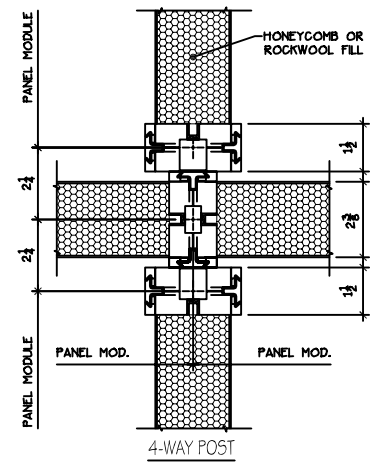
CORNER
POST
DETAILS



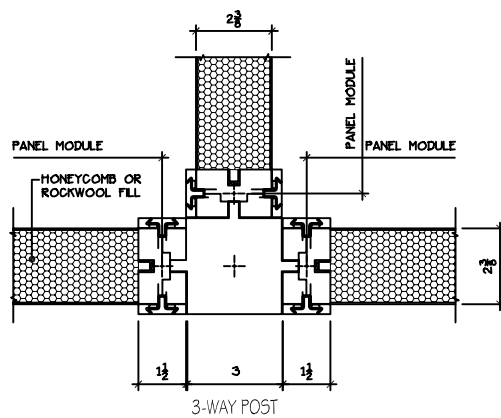
90° POST



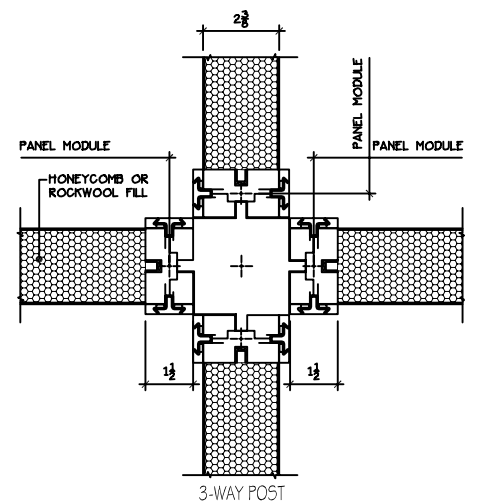
TEE POST



4-WAY POST



3-WAY POST



3-WAY POST

FLUSH METAL CORNER PANEL DETAILS